





Radiator Fireplace



Fireplace - Radiators, our construction SPECIFICATIONS

Manufacture:

Exchanger stainless steel - steel INOX (or chromonikeliouchos steel 18-9).

Outgoing exhaust chamber:

It consists of torch (toumposolines) caliber F-40 * 64 * 1,5 (mm), stainless steel 18-9, 37 pieces

Heated exchanger surface 3,44 m²

Minimum efficiency 18.000 kcal / h

Maximum yield 41.200 kcal / h

Test pressure 6 atm

Maximum operating pressure of 3 atm

Operating temperature 90 Co

Grade average yield up to 84%

ADVANTAGES

Almost feel self-cleaning with the pleonetima too easy cleaning due to construction material INOX 18-9

The construction is considered bimetallic if composed of INOX 18-9 and cast iron (cast iron)

Attributes in two ways, as boiler and heater as

ACCESSORIES

The construction accompanied by the following components:

Two safety valves, 1 & 1.4 "of 3 atm and ½» of 2,5 atm

Instrument panel consisting of two thermostats, including one for the operation of the pump and the other to produce the audio signal if the temperature exceeds 90Co

Patent Number 20110100637

Canali Design



Fireplace - Radiators Italian Construction Canali Design

SPECIFICATIONS

Made entirely of steel heavy duty with internal heat exchanger system and turbofan combustion circuit.

Thermal power: up to 29 Kw

Weight: 315kg

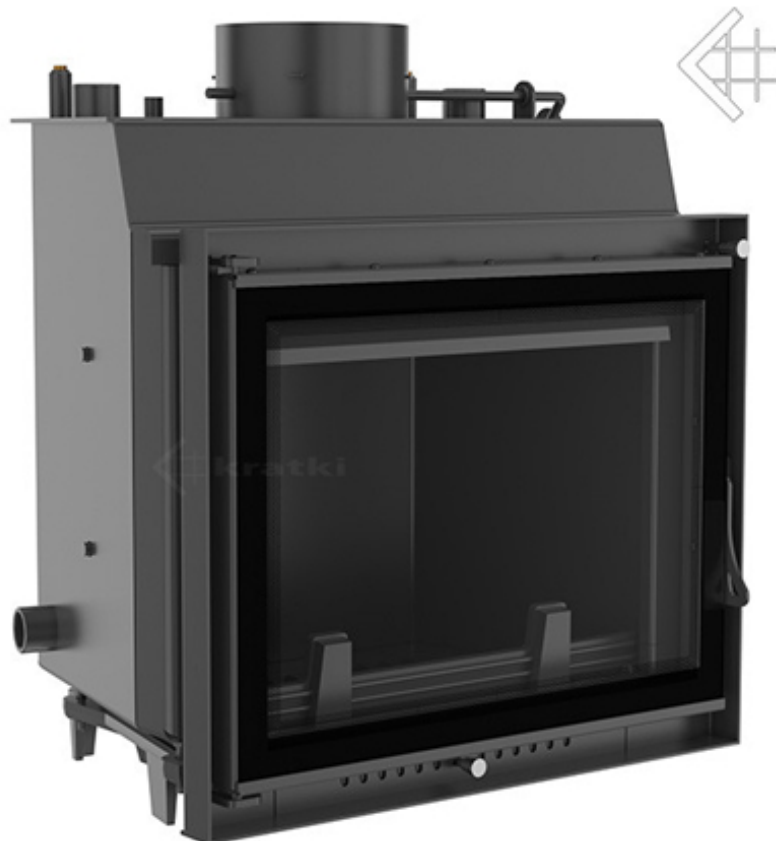
Dimensions outbreak.

Length: 903CH

Width: 679

Height .: 655 (1353)

ANTEK/PW 8 KW



Rated power: 8 KW

Average performance in water: 7kw

Diameter exag.kafsaerion: 180

CO-emission (13% O²) in%: 0.69%

Water Capacity: 17 L

Range of heat output: 4-10 kw

Thermal efficiency: 72%

Exhaust Temperature: 240 ° C

ZUZIA/PW/15 KW



Rated power: 15kw
Average performance in water: 11 kw
CO-emission (13% O²) in%: 0.29%
Water capacity: 38 L
Range of heat output: 8-19kw
Thermal efficiency: 75%
Exhaust Temperature: 278 ° C

ZUZIA/PW/19 KW



Rated power: 19kw

Average performance in water: 13 kw

CO-emission (in 13% O²) in%: 0.25%

Water capacity: 40.5L

Range of heat output: 10-24

Thermal efficiency: 75%

Exhaust Temperature: 234 ° C

ERYK/PW/10 KW



Rated power: 10kw

Average performance in water: 9 kw

Diameter exag.kafsaerion: 180

CO-emission (13% O²) in%: 0.69%

Range of heat output: 5-13

Thermal efficiency: 72%

Exhaust Temperature: 240 ° C

WIKTOR/PW/12 KW



Rated power: 12kw

Average performance in water: 10 kw

Diameter exag.kafsaerion: 200

CO-emission (13% O²) in%: 0.69%

Water capacity: 17L

Range of heat output: 6-15

Thermal efficiency: 72%

Exhaust Temperature: 240 ° C

FELIX/PW14 KW



Rated power: 14kw

Average performance in water: 11 kw

Diameter exag.kafsaerion: 200

CO-emission (13% O²) in%: 0.31%

Water capacity: 17 L

Range of heat output: 7-17

Thermal efficiency: 71%

Kafsaeriov Temperature: 322 ° C

OLIWIA/PW/17 KW



Rated power: 17 kw
Average performance in water: 13 kw
Diameter exag.kafsaerion: 200
CO-emission (13% O²) in%: 0.26%
Water capacity: 35L
Range of heat output: 8-23
Thermal efficiency: 75%
Exhaust Temperature: 325 ° C

OLIWIA/PW/22 KW



Rated power: 22kw
Average performance in water: 18 kw
Diameter hex. exhaust: 200
CO-emission (in 13% O²) in%: 0.3%
Range of heat output: 11-29
Thermal efficiency: 75%
Exhaust Temperature: 328 ° C

AMELIA/PW/24 KW



Rated power: 24kw
Average performance in water: 19 kw
Diameter exag.kafsaerion: 220
CO-emission (in 13% O²) in%: 0.3%
Water capacity: 57 L
Range of heat output: 11-30
Thermal efficiency: 78%
Exhaust Temperature: 301 ° C

AMELIA/PW/30 KW



Rated power: 30kw

Average performance in water: 22kw

Diameter hex. exhaust: 220

CO-emission (in 13% O²) in%: 0.3%

Water capacity: 60 L

Range of heat output: 13-35 Thermal efficiency: 75%

Exhaust Temperature: 315 ° C

MAJA/PW/12



Rated power: 12 kw

Average performance in water: 10kw

Diameter exag.kafsaerion: 180

CO-emission (13% O²) in%: 0.29%

Water capacity: 18 L

Range of heat output: 6-15

Thermal efficiency: 75%

Exhaust Temperature: 330 ° C